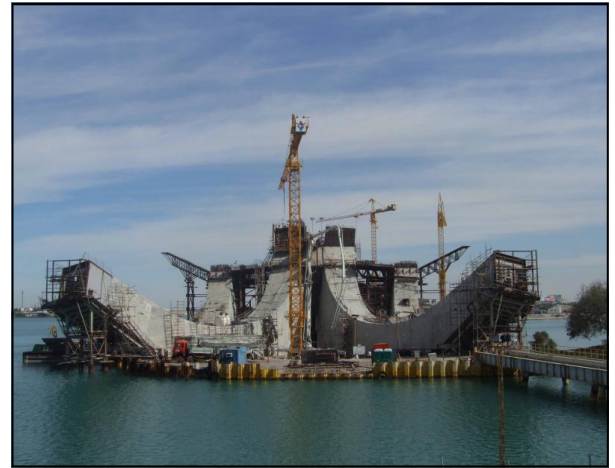
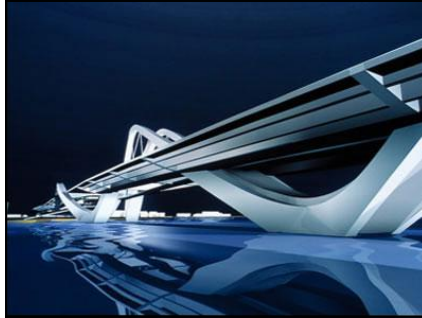


APPLICATIONS**BRIDGES AND
HIGHWAYS****ROOFS****CAR PARKS****LEISURE****RAIL****INDUSTRIAL****SECONDARY
CONTAINMENT****TUNNELS****BASEMENTS**

Project: Sheikh Zayed Bridge
Client: Abu Dhabi Municipality
Consultant: High Point Rendel
Main Contractor: Archirodon Construction (Overseas)

Images:**Project Description:**

The Sheikh Zayed Bridge project is part of a plan to connect Abu Dhabi with highways and super-highways in the rest of the Arab Emirates.

Construction of a 912m long bridge linking Abu Dhabi with the mainland with a central span of 234m. The main bridge is a hybrid structure consisting of central steel asymmetric arch ribs supporting pre-stressed concrete box girder decks. At the two main channel piers, the decks are supported by inclined pre-stressed concrete supports, rising vertically from the pier pile caps.

In order to protect this highly important structure from the effects of corrosion the client specified the use of a high performance spray applied elastomeric waterproof system with proven use within the Middle East.

The main contractor selected to use the pmb spray applied polyurethane waterproofing system due to the extensive track record of performance in use throughout the middle east which included the approach bridges to Sheikh Zayed Bridge COMPLETED IN 2005.

For More Information Please Contact:

Panama House, 184 Attercliffe Road, Sheffield, S4 7WZ, United Kingdom
t: +44(0) 114 270 0100 f: +44(0)114 276 8782 e: info@pitchmasticpmb.co.uk

Pitchmastic PmB (Dubai Branch), PO Box 54220, Dubai, United Arab Emirates
t: +971 4 324 3050 f: +971 4 324 3052 e: info@pitchmasticpmb.co.uk