

Case Study....

Structural Protection Guaranteed

PITCHMASTIC PmB

www.pitchmasticpmb.co.uk

BRIDGES &
HIGHWAYS

RAIL

AIRPORTS

ROOFING

WATER SUPPLY

BASEMENTS

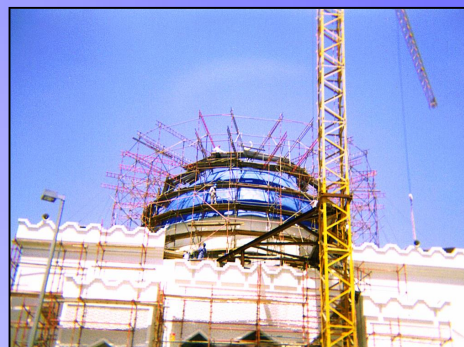
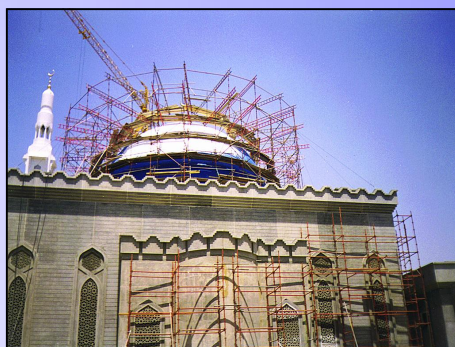
TUNNELS

CAR PARKS

Project : Saif Bin Darwish Mosque
Location: Abu Dhabi, United Arab Emirates
Client: Mr Saif Bin Darwish
Consultant: R K Crockers
Contractor: Darwish Contracting Co



Images:



Description:

PmB can be utilised as a roof sealing membrane on prestigious structures where long-term integrity is deemed essential.

Mosque roofs and domes are generally ornate and technically demanding structures. Permanent waterproofing presents many problems due to the UAE ambient surface temperatures.

Thermal movement is just one problem when temperatures range from 10°C at night up to 60°C through the 24 hour cycle. Most products cannot cope with the movement generated by the extremes of temperature.

The PmB membrane copes easily with shrinkage cracks, movement joints and difficult profile details. The use of PmB also allows significant weight reduction by the omission of screeds and tiles necessary with more traditional forms of waterproofing.



Waterproofing



A Division of Pitchmastic PmB Ltd



International

For more information regarding this case study please contact:

Pitchmastic PmB Limited

Panama House, 184 Attercliffe Road, Sheffield, S4 7WZ

T: +44 (0) 114 270 0100

F: +44 (0) 114 276 882

E: info@pitchmasticpmb.co.uk